

**MEXICO**  
THE TRUE TASTE



1 meter  
SCALE BAR  
5 meters

naomi design limited,  
restaurant & food retail spaces,  
7 carden close, Brighton, BN1 6P  
tel: 0771 303 9789  
e: naomiodesign@me.com

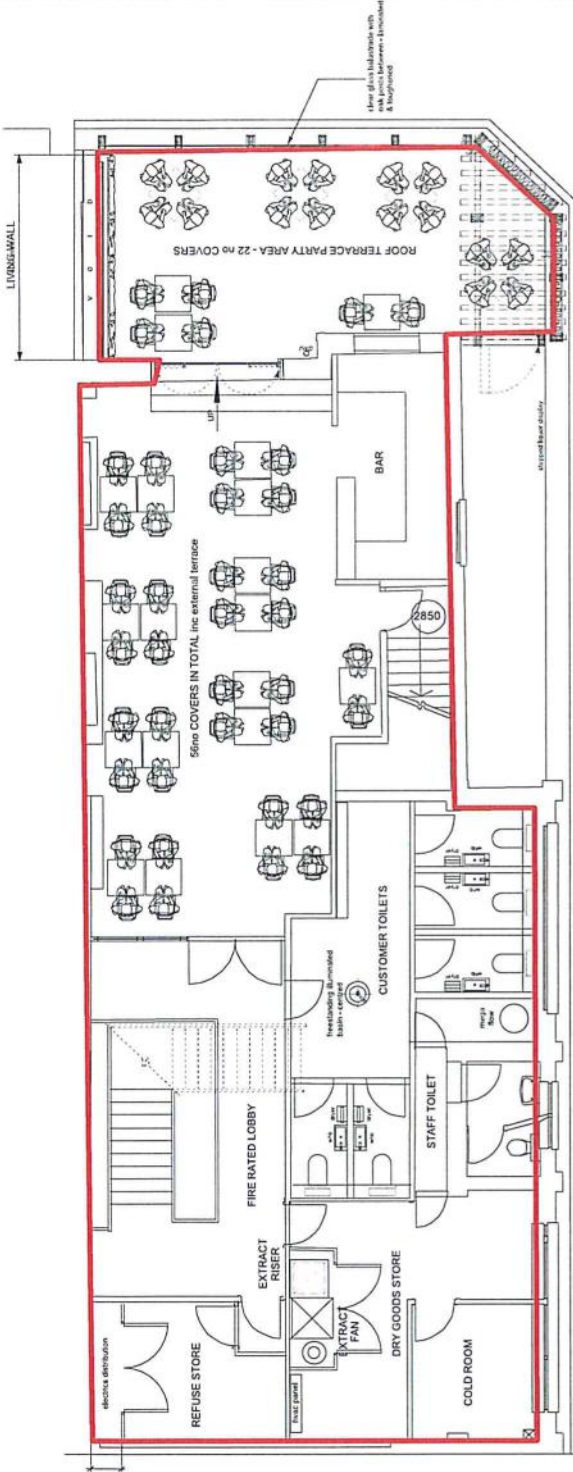


80 THE BROADWAY, WIMBLEDON,  
LONDON SW19 1RH

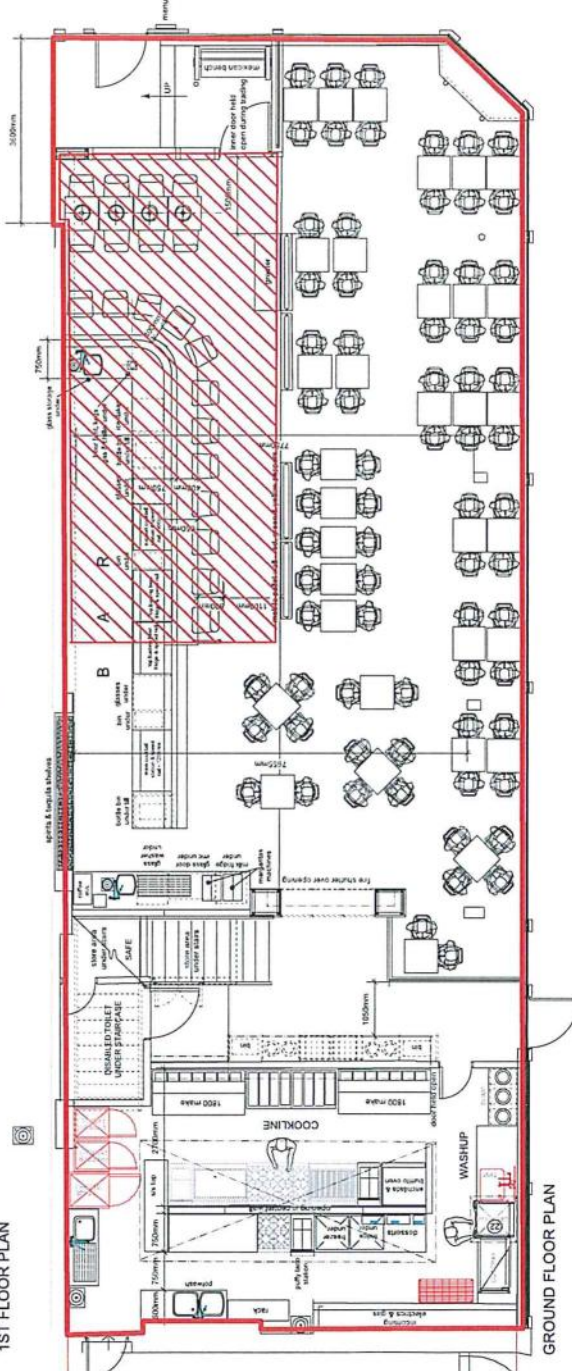
PROPOSED GROUND & 1ST FLOOR  
PLANS

246 L03

LICENSING



1ST FLOOR PLAN



GROUND FLOOR PLAN

80no ground floor dining covers
12no eating at ground floor bar
34no 1st floor dining covers
22no eating on 1st floor terrace
126no internally
22no externally
148no in total internal & external

This page is intentionally left blank